



Key Features

- 10x Increased Aeration Over Standard Shake Flasks
- Increased DNA & Protein Production
- Fully Scalable Results
- Replacement For Glass Flasks
- Fit All Standard Flask Clamps
- Easily Adaptable Into Microbial Growth Protocols
- Sterile, Disposable, Single-Use Flasks From 125mL - 2.5L

Part Numbers

Part #	Flask Size	Qty/Case
9311147	125mL	50
931144	250mL	50
931141	500mL	25
931138	1.5L	12
931138-VC	1.5L w/ Vent Cap	12
931136-B	2.5L	6
931136-B-VC	2.5L w/ Vent Cap	6

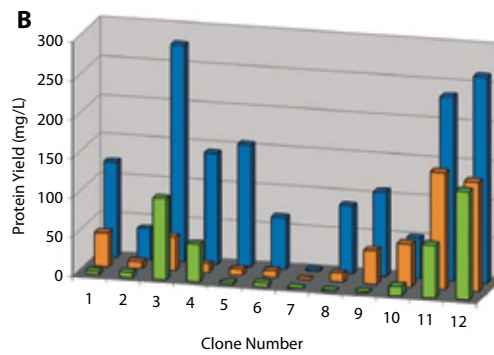
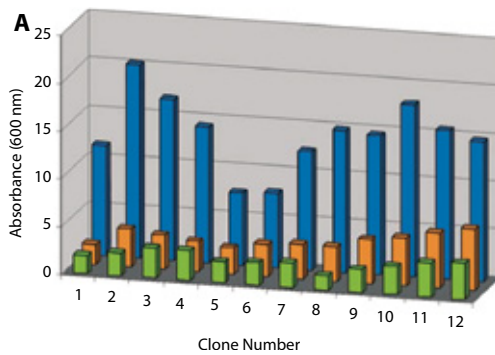
To see the full specifications of this product visit htslabs.com where you can also find application notes, videos and more on all of our products.

Thomson Ultra Yield™ Solution

Thomson's Ultra Yield Flasks™ (patented) have proven over the last decade to enhance the growth of E.coli & other microbial cells. The patented flask design makes them the workhorse of protein and DNA labs worldwide. The Ultra Yield™ Flasks come in standardized sizes of 125mL, 250mL, 500mL 1.5L & 2.5L. The flasks are designed to be closed on top by using our AirOtop™ Enhanced Seals (patented). These seals are designed to fit on the tops of the flasks. AirOtop™ Enhanced Seals are sterile, easy to use, and single use. The AirOtop™ Enhanced Seals properties include a 0.2µm resealable sterile membrane barrier providing high air exchange for all types of shake flasks. Multiple sizes are available to keep all of your flasks covered. Testing has been conducted at multiple customer sites with great results on up to 24 hours of growth. The organisms tested included Protista (Algae), E.coli and other microbes which have resulted in improved cell density, a more neutral pH of the cultures with increased gas exchange.

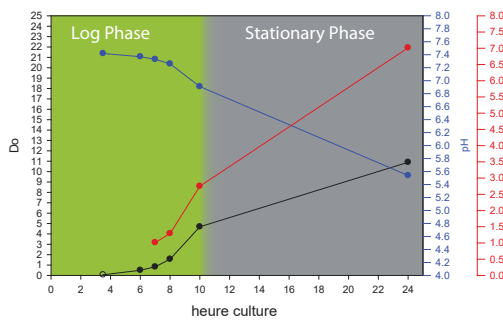


WELL PLATE FLASK BIOREACTOR SCALABLE THROUGH THE ENTIRE PROCESS

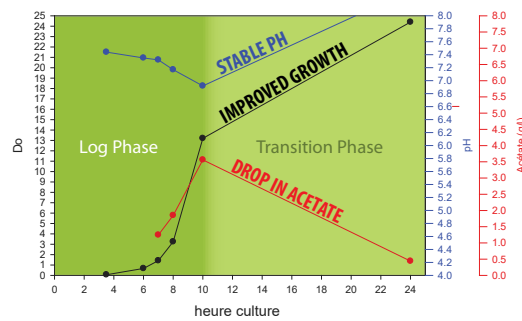


Thomson UYF Corning* Glass

*Economical parallel protein expression screening and scale-up in Escherichia coli. Journal of Structural and Functional Genomics 2006 Jun;7(2):101-8. Epub 2006 Dec 23.



E.coli : Growth profiles **with classical glass flask** (2 L, no baffle), 400 mL Thomson medium, 400 rpm orbital shaker



E.coli : Growth profiles **with Thomson flask** (2.5L Ultra Yield Flask, baffles), 500 mL Thomson medium, 400 rpm orbital shaker

● O.D. ● pH ● Acetate g/L

Thomson Instrument Company is not affiliated with Pfizer, GSK or their products

