

QF20kSU

Quaternary Diaphragm Pumps

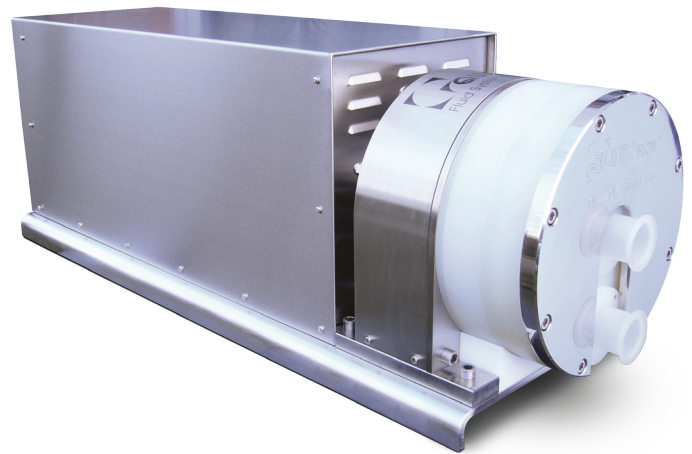
Single-Use – Biotech/Biopharma

Features

- Fully disposable machined polypropylene pump chamber
- Easy replacement
- 4-piston technology
- Gentle product treatment
- Low pulsation
- Linear flow characteristic
- Self-priming
- Safe dry-run operation
- Elimination of cleaning validation and cross contamination

Applications

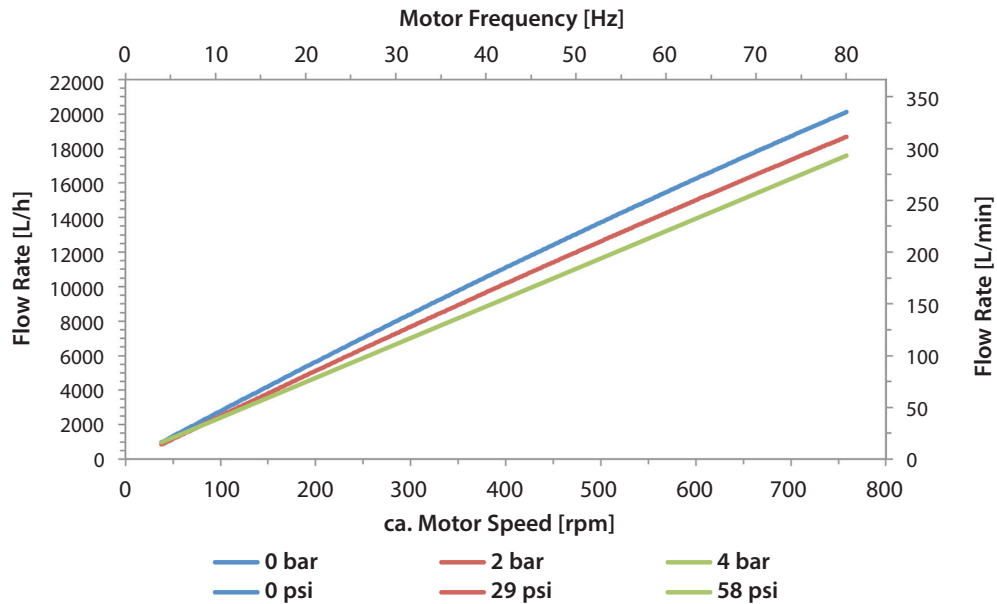
- Filtration systems (TFF, etc.)
- Chromatography systems
- Feeding pump
- Virus filtration
- Sterile filtration



QF20kSU Standard Motor	
Flow Rate Maximum:	
Eccentric Shaft 7°	16,000 lph (267 lpm)
Flow Rate Minimum:	
Eccentric Shaft 7°	1,000 lph (16.7 lpm)
Pressure:	
Temperature of Fluid < 40° C (104° F)	4 bar (58 psi)
Temperature of Fluid > 40° C (104° F)	4 bar (58 psi)
Maximum Temperature:	
Fluid	60° C (140° F)
Suction Lift Dry at 1200 rpm:	
Eccentric Shaft 7°	4-4.5 m (13.1-14.7 ft)
Volume Specifications:	
Approximated Volume per Revolution at Free Output	470 ml
Filling Volume Without Connectors	2,950 ml
Connection Specification (Standard):	
Connectors	2" TC
Position of Connectors	Front

QF20kSU Standard Motor	
Product Wetted Materials (Standard):	
Pump Chamber	PP
Valve Plate	PP
Diaphragms	TPE
Valves	EPDM / SS316L
O-rings	EPDM
Certificates/Proofs (Optional):	
Elastomere (product wetted)	USP <88> Cl. VI; FDA21CFR177; BSE/TSE Safe; USP 87/381/661
Motor (Standard):	
Rated speed	1,460/474 min ⁻¹ (50Hz)
Voltage	230/400 V
Power	4 KW
Pump Dimension with Motor and Housing:	
Length	1,152.5 mm (45.37")
Width	400 mm (15.75")
Height	416 mm (16.38")
Pump Weight with Motor and Housing:	
	190 kg (419 lb.)

Performance Chart



Depending on the selected motor/frequency drive combination, the motor frequency and the resulting pump speed might differ.

Accessories

Control Box



- Variable speed controller with integrated touch pad for manual speed control
- Configurable for remote speed control with 4-20 mA analogue input
- 400 V, 3P
- Hygienic 1.4301 housing, IP 54
- Easy plug & play installation

Diaphragm Sensor

- Sensor installed in ring drive unit
- Detection of all liquids
- Signal output to a controller, if diaphragm is ruptured

QUATTROFLOW™
Fluid Systems

ALMATEC Maschinenbau GmbH
Carl-Friedrich-Gauß-Str. 5
47475 Kamp-Lintfort, Germany
O: +49/2842/961-0, F: +49/2842/961-40
info@almatec.de
quattroflow.com

© 2016 ALMATEC

PSG
a DOVER company

Authorized PSG® Partner:

QTF-20060-T-01